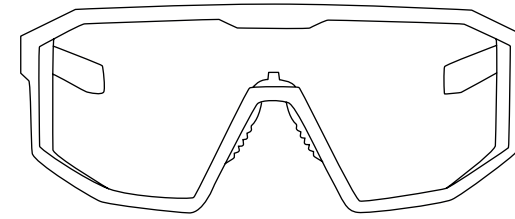
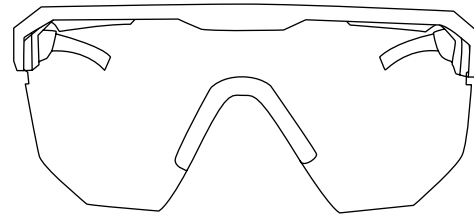


# ROSE

Half Frame Cycling Glasses

Full Frame Cycling Glasses



All ROSE sunglasses comply with Regulation (EU) 2016/425 and Directive 2001/95/EC.  
Standards and specifications applied: DIN EN ISO 12312-1: 2015

- The sunglasses are not for direct observation of the sun or for protection against artificial UV rays.
- Not for use as eye protection against mechanical impact.
- Only clean with water and soap or proper lens care products.
- Store the glasses in the box provided and avoid extreme temperature fluctuations during storage.
- Check the lenses for scratches and dirt, as this can significantly impair vision, especially at night.
- Check the glasses for damage before use or after a fall.

All ROSE lenses are made of break-proof polycarbonate and all tints offer 100% protection from UV-A and -B rays.  
Lightweight Grilamid frame with enhanced flexibility and durability

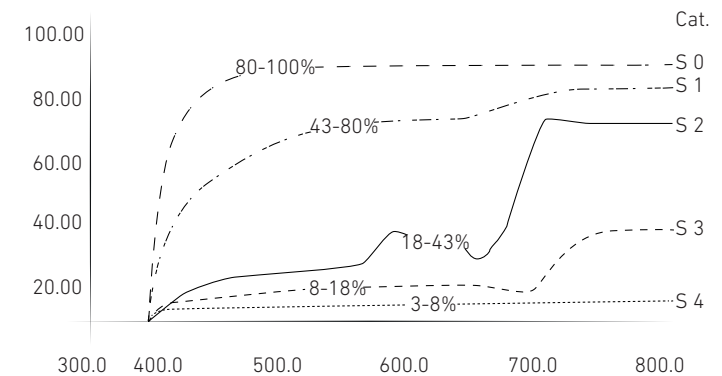
All ROSE lenses with filter category 1-3 are not suitable for driving in low light and darkness.  
You can find the filter category of the glasses on the lens.

## ROSE lenses:

- smoked lens (black, filter category 3): for very bright light conditions and light-sensitive eyes
- aurora lens (bluish, filter category 2): for bright light conditions
- clear (transparent, filter category 0): ideal for fog, twilight and darkness or as protection against dirt

Filter category	Description	Use	Symbol
0	Lightly tinted sunglasses	Very limited filtering of the solar radiation	 IEC 60417-5955
1	Lightly tinted sunglasses	Limited protection from solar radiation	 ISO 7000-2948
2	Sunglasses for general use	Good protection from sunlight	 ISO 7000-2949
3	Sunglasses for general use	High protection from solar radiation	 ISO 7000-2950

## Transmission diagram



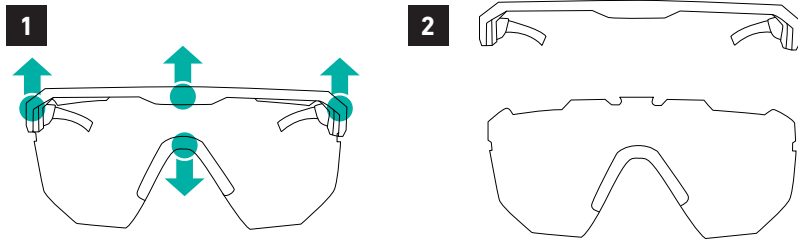
**ROSE Bikes GmbH**

Schersweide 4, 46395 Bocholt, Germany  
Made in Taiwan

[www.rosebikes.com](http://www.rosebikes.com)

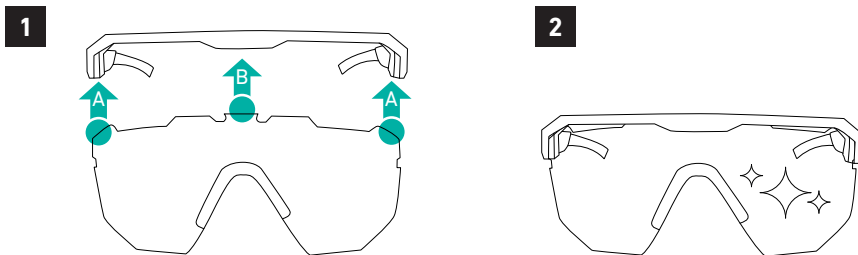
## Half Frame Cycling Glasses

### Removing the lenses



1. First release the lens lock in the centre and then on the upper right and left edges of the frame.
1. Carefully pull the lens out of the frame.

### Attaching the lenses

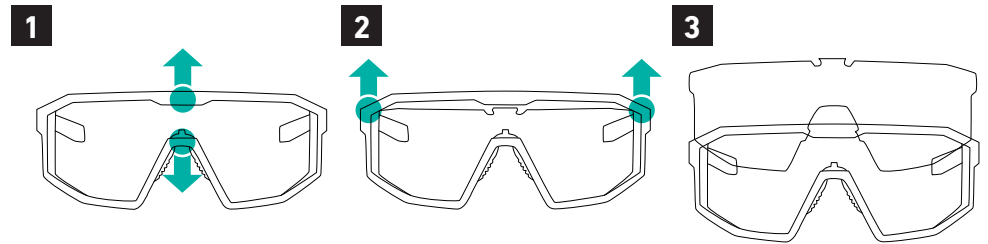


Clean the frame thoroughly before attaching the glass.

1. Slide the frame onto the lens. First press the frame carefully into the lens latches on the right and left upper edge (A) and then in the middle (B) until you hear and feel the lens click into place.
5. Clean the lens thoroughly.

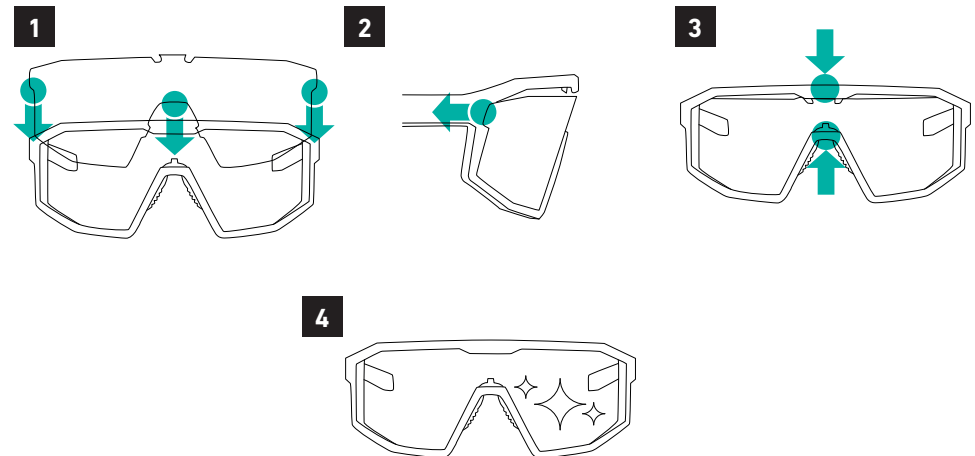
## Full Frame Cycling Glasses

### Removing the lenses



1. Carefully pull the upper temple in the middle of the frame upwards until the frame detaches from the lens.
6. Release the latches on the top right and left edges and start to carefully slide the lens upwards.
7. Remove the lens.

### Attaching the lenses



Clean the frame thoroughly before attaching the glass.

1. Slide the lens into the frame.
2. Carefully press the lens into the side latches in the frame.
3. Carefully press the frame into the middle latch in the lens until you hear and feel the lens click into place.
4. Clean the lens thoroughly.